

# DSM

CONTRACT  
LIFTING  
SERVICES



## Böcker AK 42 Truck Crane



# TECHNICAL INFORMATION

## Böcker AK 42 Truck Crane

The AK 42 crane is engineered for fast and efficient operation, thanks to its powerful hydraulic system and rapid setup time. Built with high-strength fine-grained steel, its innovative mast profile ensures excellent lateral stability when lifting heavy loads. With a capacity of up to 3 tonnes (optional 6 tonnes) and a boom length of up to 42 metres (extendable to 45 metres), the AK 42 handles significant loads over long distances effortlessly.



The hydraulic system boosts performance by up to 70%, allowing for faster operation and simultaneous execution of multiple functions. With a 1.5-tonne load, it achieves an 18-metre reach and 24-metre height, making the AK 42 both powerful and versatile for demanding tasks.



A key feature is its mast, which can be positioned vertically at a 90° angle to the vehicle, a first in its class. The 180° jib further enhances height capabilities, while the tower crane function allows horizontal movement of loads into buildings. Compact with a 2.35-metre outrigger width, the AK 42 is also equipped with advanced control technology for precision handling.



# SPECIFICATIONS

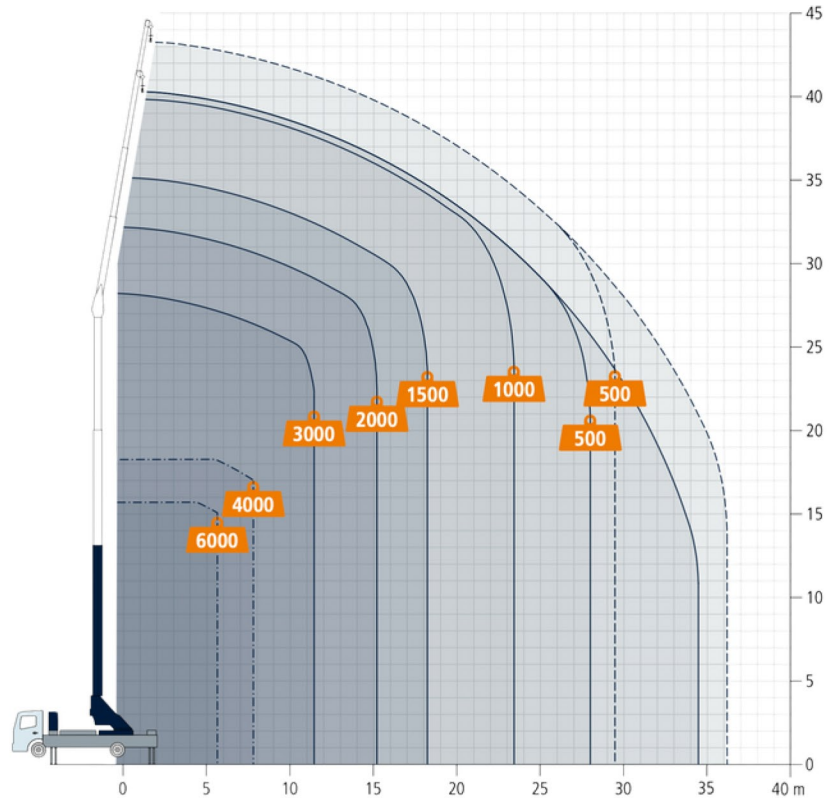
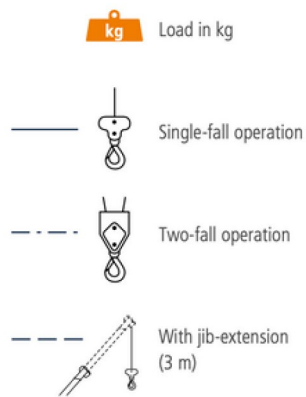
## TECHNICAL DATA

PERMISSIBLE GROSS VEHICLE WEIGHT [T]	18
MAX. PAYLOAD [KG]	3,000 (OPT. 6,000)
MAX. EXTENSION LENGTH [M]	41.9 (opt. 44.9)
WORKING HEIGHT UP TO JIB [M]	27.5
JIB HYDRAULICALLY EXTENDABLE [M]	6.3 - 14.4 (opt. 17.4)
JIB PAYLOAD [KG]	3,000 - 1,000 (500)
BOOM ANGLE [DEGREES]	90
JIB ANGLE [DEGREES]	180
PIVOTING RANGE [DEGREES]	ENDLESS
HOOK SPEED [M/MIN]	60
RANGE FOR CRANE OPERATION AT 500 KG [M]	28.0
RANGE FOR CRANE OPERATION AT 1 T [M]	23.4
RANGE FOR CRANE OPERATION AT 2 T [M]	15.2
RANGE FOR CRANE OPERATION AT 3 T [M]	11.4
RANGE FOR CRANE OPERATION AT 4 T [M]	7.8
RANGE FOR CRANE OPERATION AT 6 T [M]	5.7
RANGE / WORKING HEIGHT MAX. [M]	
WITH NON-ROTATING BASKET 250 KG	29.7 / 42.8
WITH ROTATING BASKET 250 KG (PK 250-D)	29.0 / 42.8
WITH ROTATING BASKET 350 KG (PK 350-D)	24.7 / 38.6
WITH ROTATING BASKET 600 KG (PK 600-D)	21.2 / 36.5
DRIVE	PTO / 400 V hybrid

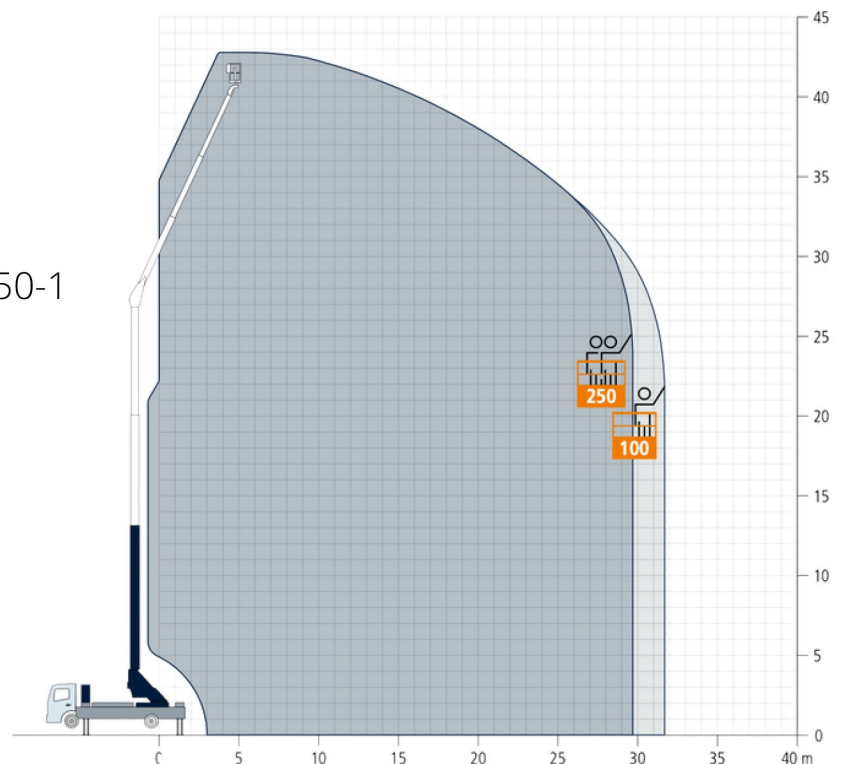


# SPECIFICATIONS

## Working range crane operation

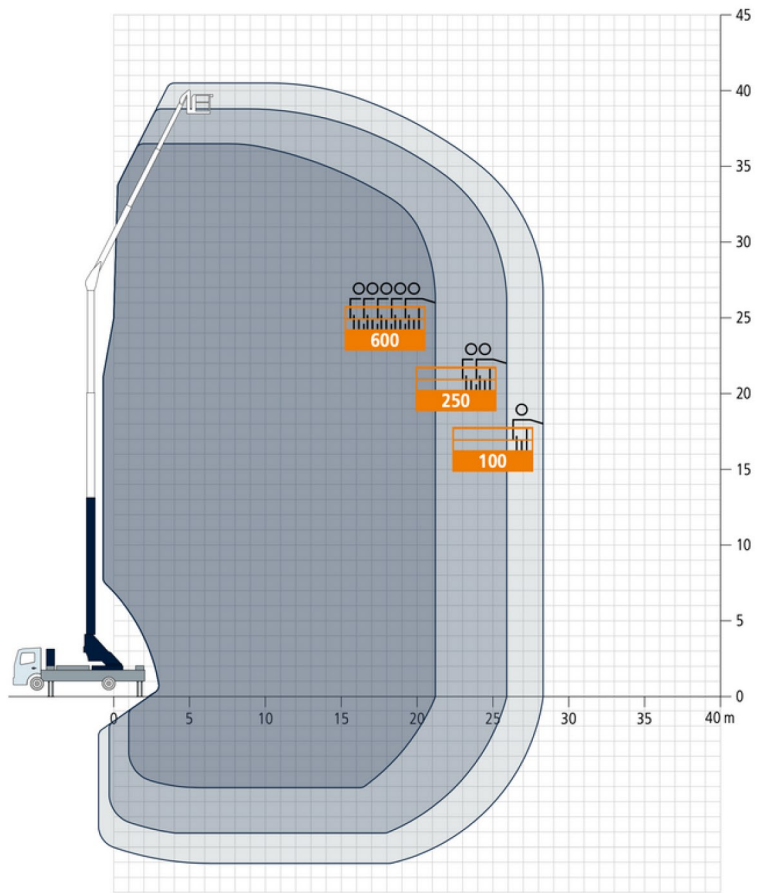


## Working range platform operation Non-rotating basket PK 250-1

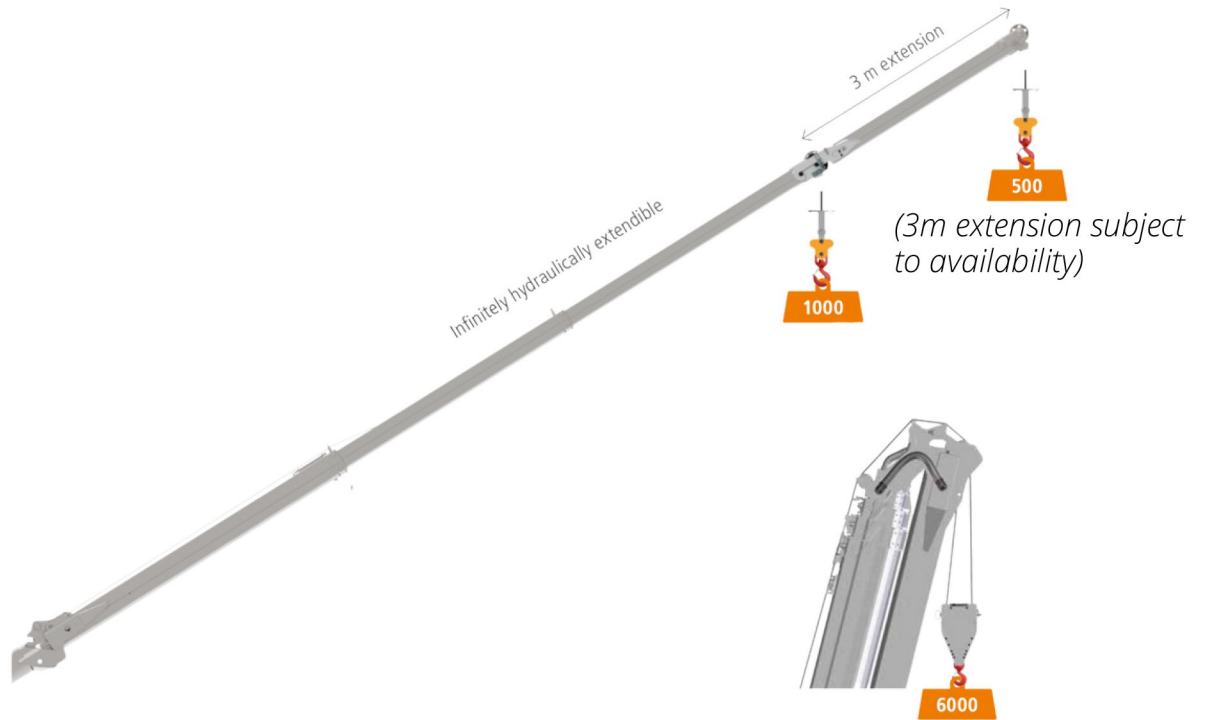


# SPECIFICATIONS

Working range  
platform operation  
Rotating and extendible  
work basket PK 600-D

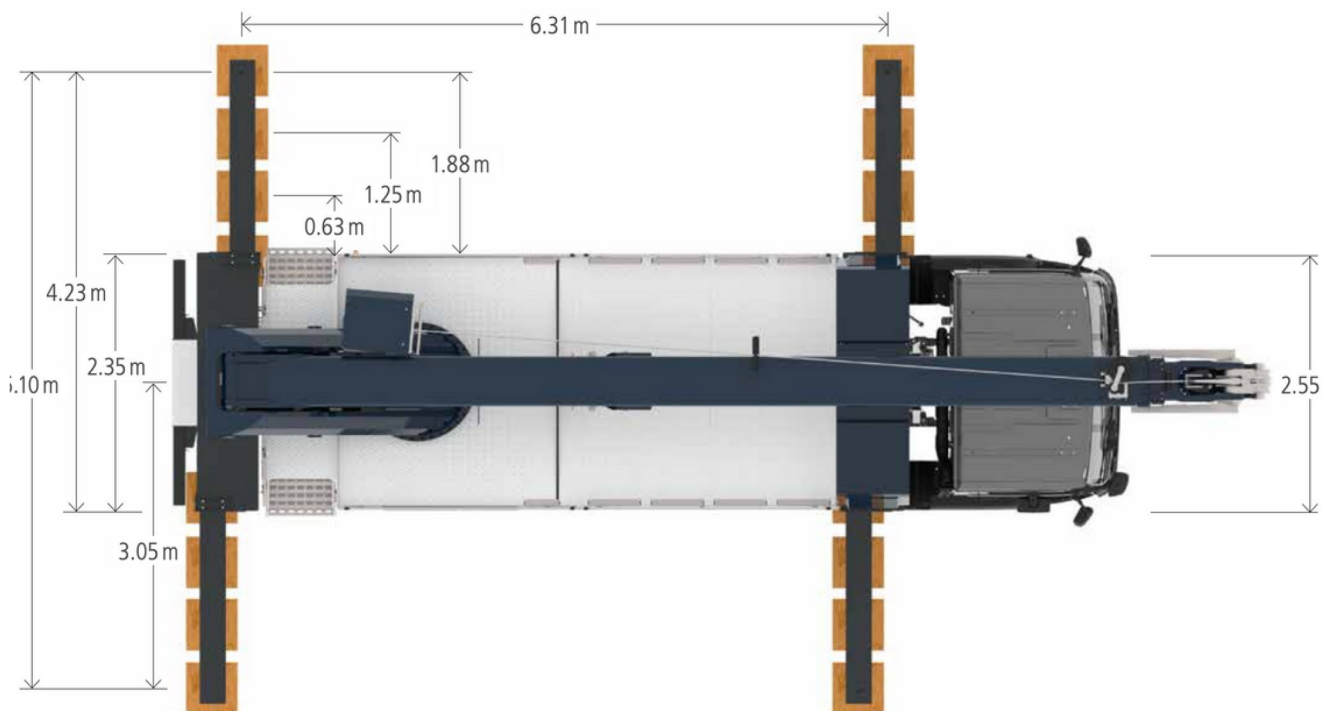
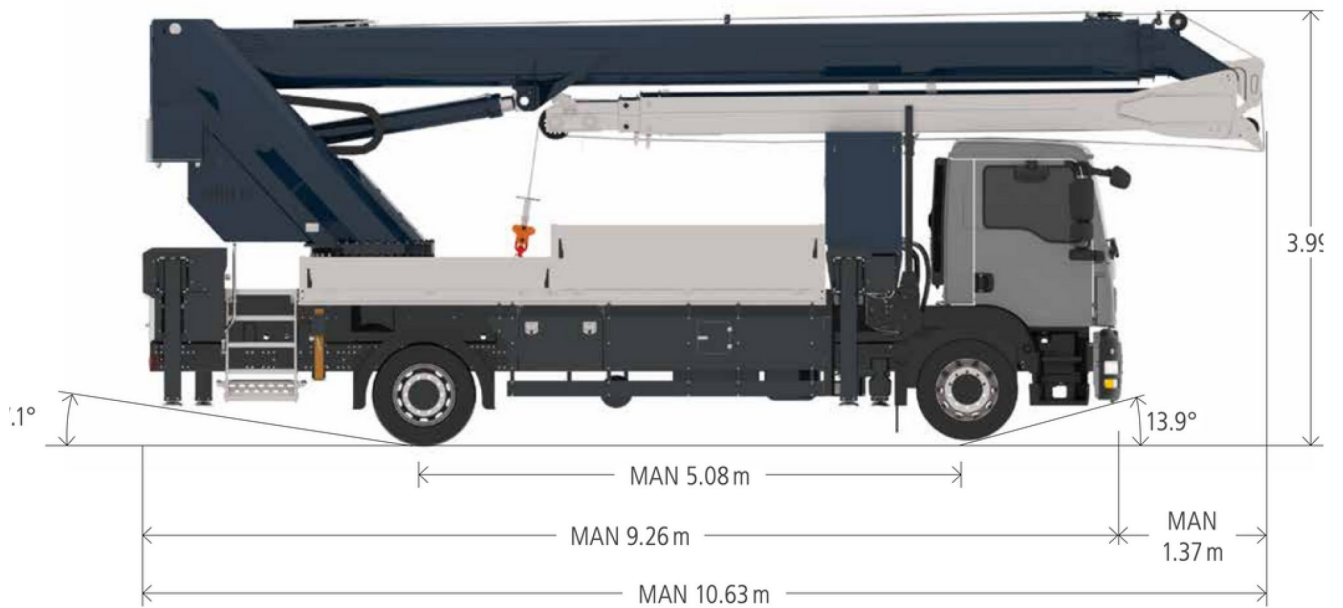


Jib



# SPECIFICATIONS

## Dimensions







“

**IT'S CONTRACT  
LIFTING, WITH  
A PROJECT  
APPROACH**

”



**The Old Rectory, Church Road, Bowers Gifford, Basildon. SS13 2HG**

0203 948 9659

[contracts@dsmcls.co.uk](mailto:contracts@dsmcls.co.uk)

[www.dsmcls.com](http://www.dsmcls.com)